

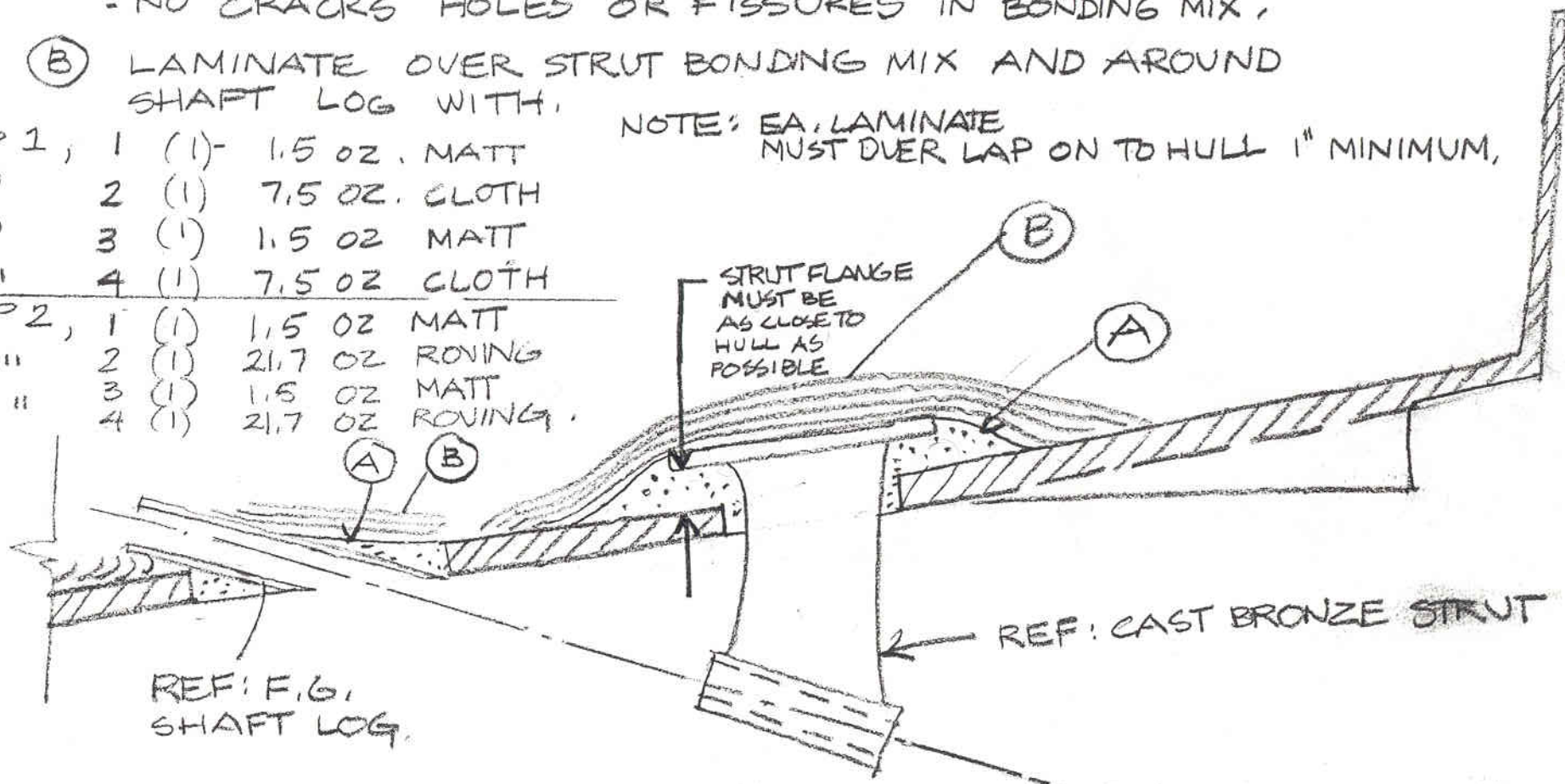
(A) - RESIN MIX - w/ HI-FIB 250 and CHOPPED STRAND
 PACK SOLID UNDER STRUT AND FAIR TO HULL
 INSIDE HULL AT 45°, OUTSIDE FAIR TO ADJACENT SURFACE
 - NO CRACKS HOLES OR FISSURES IN BONDING MIX,

(B) LAMINATE OVER STRUT BONDING MIX AND AROUND
 SHAFT LOG WITH,

NOTE: EA. LAMINATE
 MUST OVER LAP ON TO HULL 1" MINIMUM,

STEP 1, 1 (1) - 1.5 OZ. MATT
 " 2 (1) 7.5 OZ. CLOTH
 " 3 (1) 1.5 OZ MATT
 " 4 (1) 7.5 OZ CLOTH

STEP 2, 1 (1) 1.5 OZ MATT
 " 2 (1) 21.7 OZ ROVING
 " 3 (1) 1.5 OZ MATT
 " 4 (1) 21.7 OZ ROVING



CATALINA YACHTS INC.

SCALE: NONE

APPROVED BY:

DRAWN BY GD,

DATE: 10-29-80

REVISED

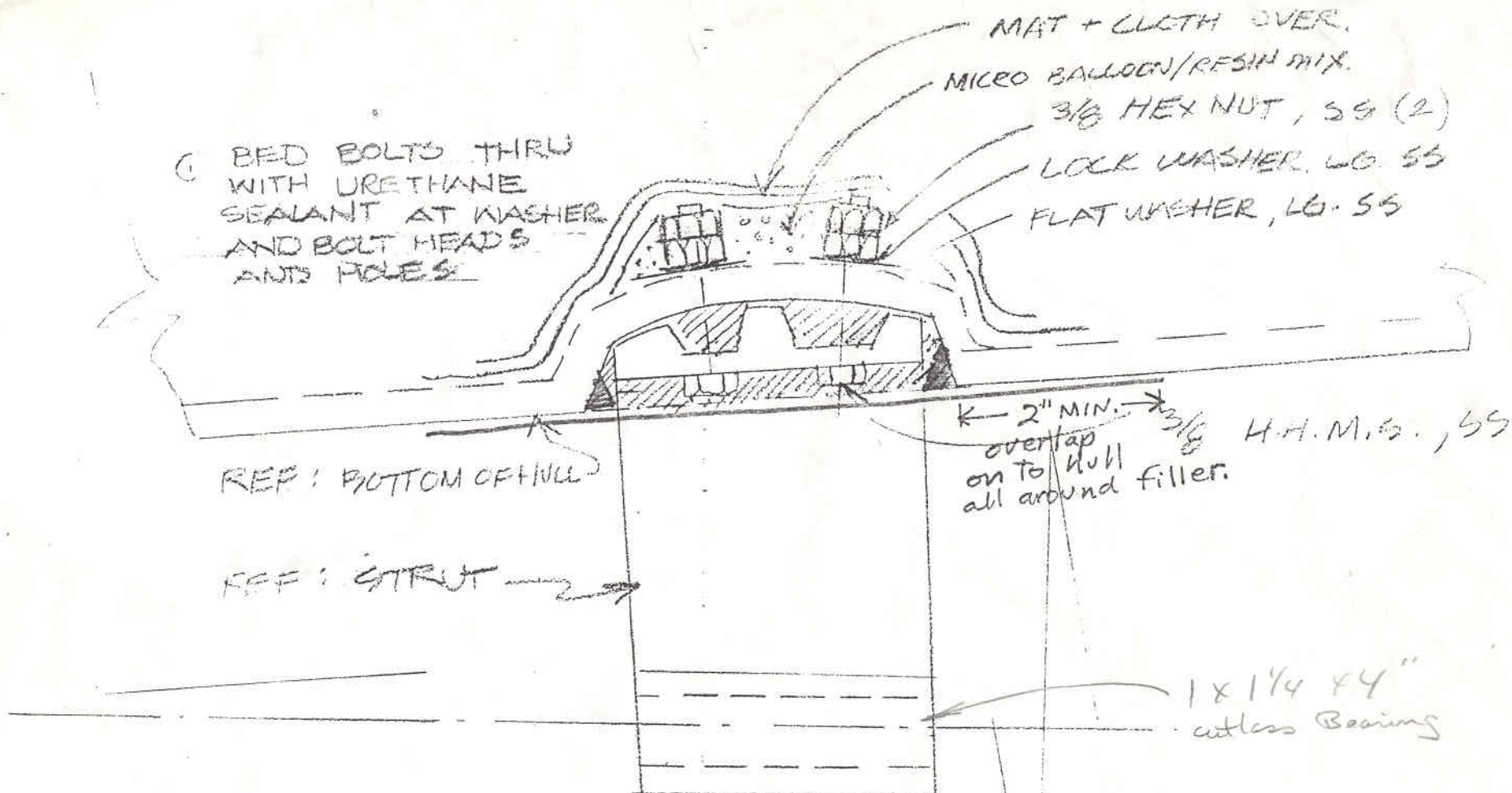
STRUT AND SHAFT LOG BONDING

CATALINA 27 and 30

DRAWING NUMBER

300-50013-1

P/N 50074

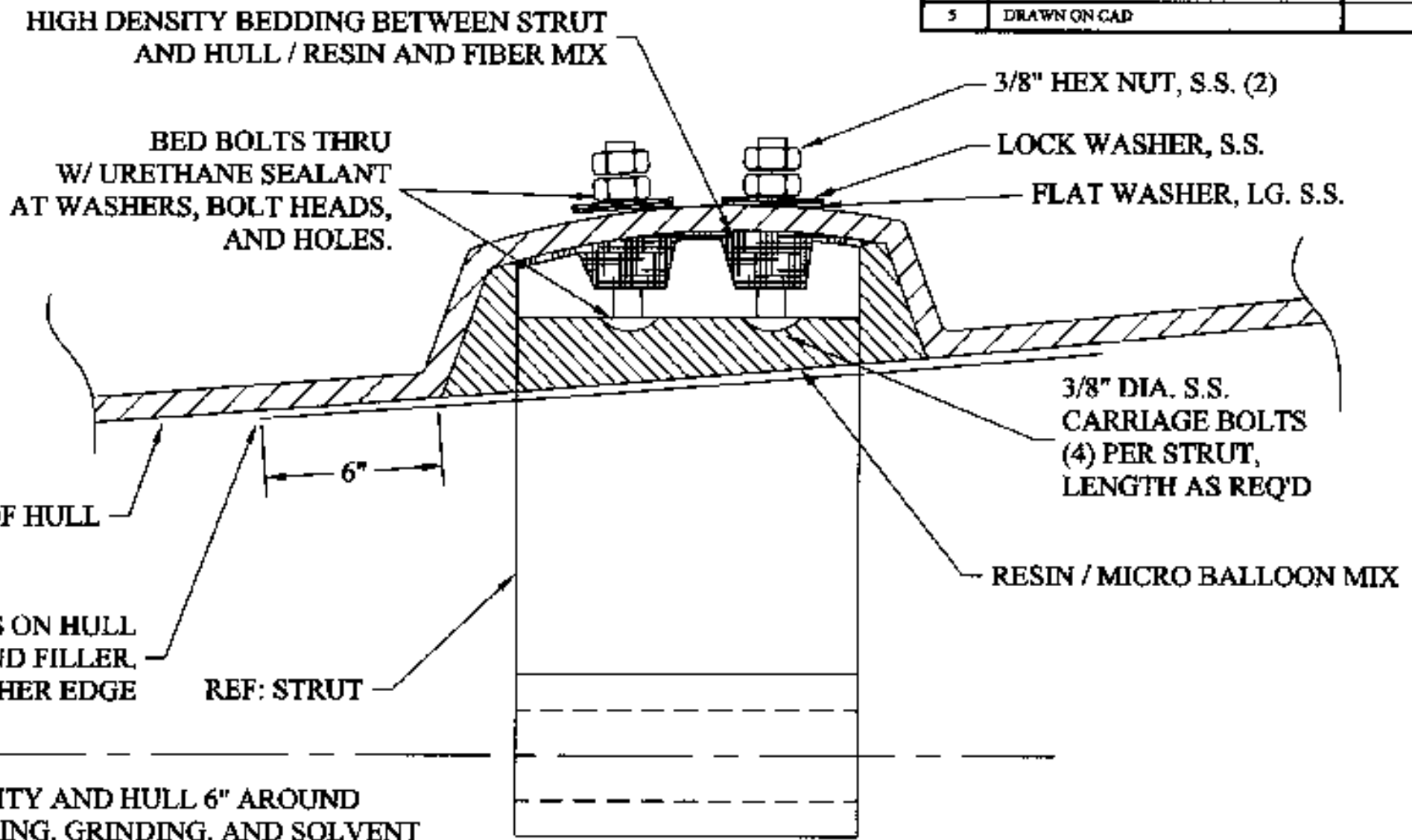


- 1) DETERMINE STRUT ANGLE BY SETTING STRUT IN PLACE W/ SHAFT
- 2) DRILL $\frac{3}{8}$ " D. HOLES IN HULL THRU STRUT
- 3) REMOVE STRUT SET IN PLACE W/ REINFORCED RESIN MIX
- 4) BOLT STRUT IN PLACE RED BOLTS AND WASHERS WITH URETHANE SEALANT
- 5) FILL AND FAIR STRUT TO HULL W/
- 6) GLASS OVER FILLER W/
 - (1) 1.5 OZ MATT
 - (1) 7.5 OZ CLOTH
- 7) PAINT W/ ACTIC PRIMER

- 8) AFTER TIGHTENING NUTS, PACK AROUND NUTS W/ MICRO BALLON-RESIN MIX.
- 9) GLASS OVER NUTS W/
 - (1) 1.5 OZ MATT
 - (1) 7.5 OZ CLOTH

CATALINA		
SCALE: NONE	APPROVED BY:	DRAWN BY: <u>GD</u>
DATE: 12-11-80		REVISED 1-5-83
EXTERNAL STRUT INSTALLATION		
CAT 27, 28, 30, ³²⁰ 34, 36, 38		DRAWING NUMBER 300-50014-2

REV	DESCRIPTION	APPROVAL	DATE
5	DRAWN ON CAD		1/28/03



- 1) PREP INSIDE OF CAVITY AND HULL 6" AROUND CAVITY, BY DEWAXING, GRINDING, AND SOLVENT WIPE DOWN.
- 2) DETERMINE STRUT ANGLE BY SETTING STRUT IN PLACE W/ SHAFT.
- 3) DRILL 3/8" DIA. HOLES IN HULL THRU STRUT.
- 4) REMOVE STRUT AND SET IN PLACE W/ REINFORCED RESIN AND FIBER MIX BETWEEN STRUT AND HULL.
- 5) BOLT STRUT IN PLACE -- BED BOLTS AND WASHERS WITH URETHANE SEALANT INSIDE HULL.
- 6) FILL AND FAIR STRUT TO HULL W/ RESIN / MICRO BALLOON MIX.
- 7) GLASS OVER FILLER W/ V.E. RESIN AND
 - (1) 0.75 OZ MATT
 - (1) 7.5 OZ CLOTH
 OVERLAP ON HULL 6" -- FEATHER EDGE
- 8) GEL COAT TO MATCH HULL

PROPRIETARY INFORMATION
 THE DESIGN, INFORMATION, AND DATA CONTAINED HEREIN ARE PROPRIETARY AND ARE SUBMITTED BY USU YACHTS, AND SHALL NOT BE DISCLOSED, USED, OR REPLICATED, IN WHOLE OR IN PART, FOR ANY PURPOSES WHATSOEVER, WITHOUT THE WRITTEN PERMISSION OF CATALINA YACHTS, 21200 VICTORY BLVD., WOODLAND HILLS, CALIFORNIA 91367. THIS DOCUMENT SHALL BE RETURNED TO USU UPON REQUEST AND NO PART HEREOF SHALL BE REPRODUCED OR TRANSMITTED IN ANY FORM OR BY ANY MEANS, ELECTRONIC OR MECHANICAL, INCLUDING PHOTOCOPYING, RECORDING, OR BY ANY INFORMATION STORAGE AND RETRIEVAL SYSTEM, WITHOUT THE WRITTEN PERMISSION OF CATALINA YACHTS.

UNLESS OTHERWISE SPECIFIED DIMENSIONS ARE IN INCHES
 GENERAL TOLERANCES
 ANGLES: $\pm 0.5^\circ$
 X.X: ± 0.1
 X.XX: ± 0.01
 X.XXX: ± 0.005
 SURFACE FINISH: σ
 DO NOT SCALE DRAWING

Catalina Yachts 21200 VICTORY BLVD. WOODLAND HILLS, CA 91367 -- (818) 884-7700

SCALE: NONE	APPROVED BY:	DRAWN BY: K.W.M.
DATE: 12/11/80		REVISED: 1/28/03
EXTERNAL STRUT INSTALLATION		
BOAT: CAT 28 THROUGH 400		DRAWING NUMBER: 300-50014-5