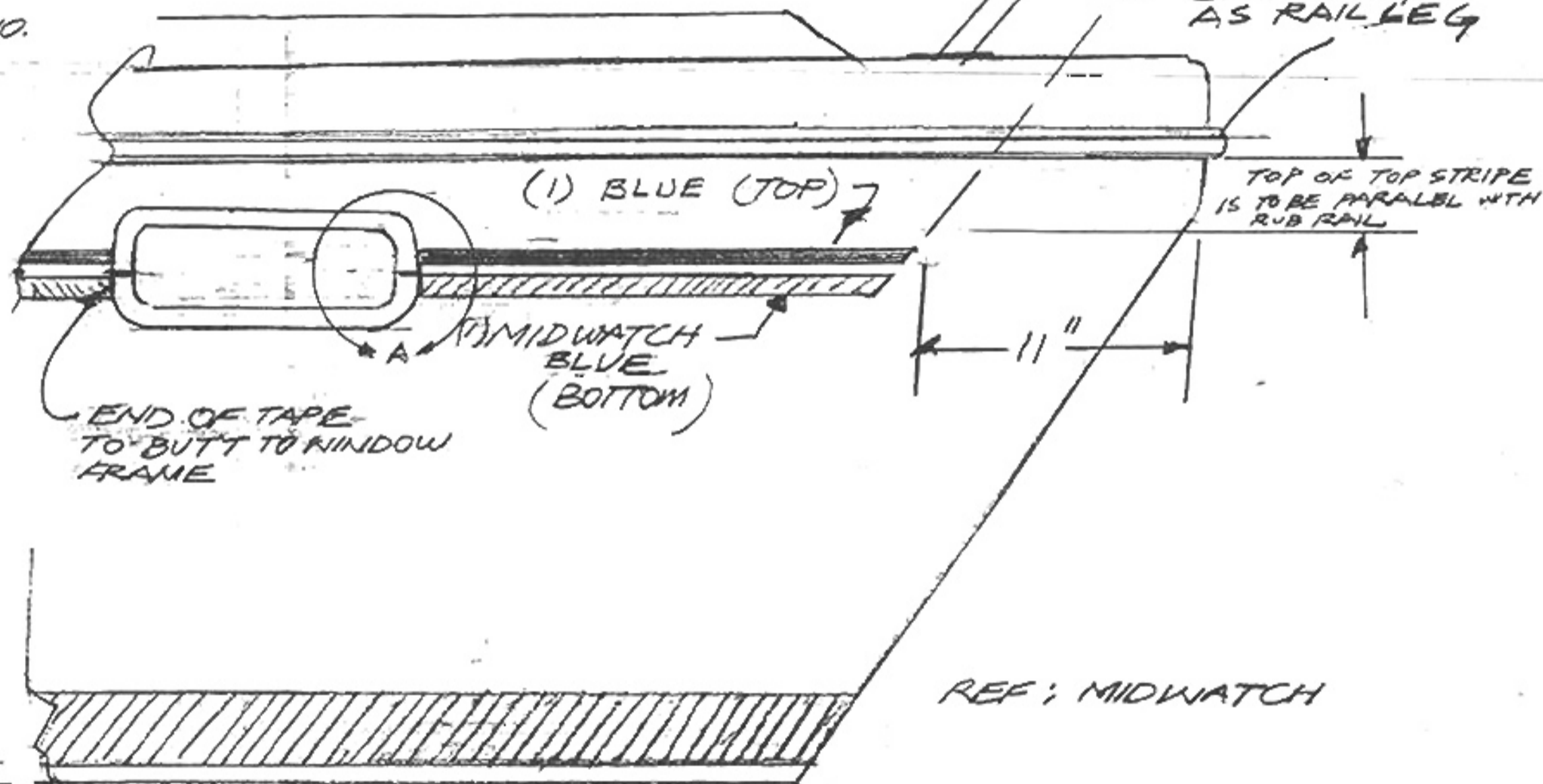
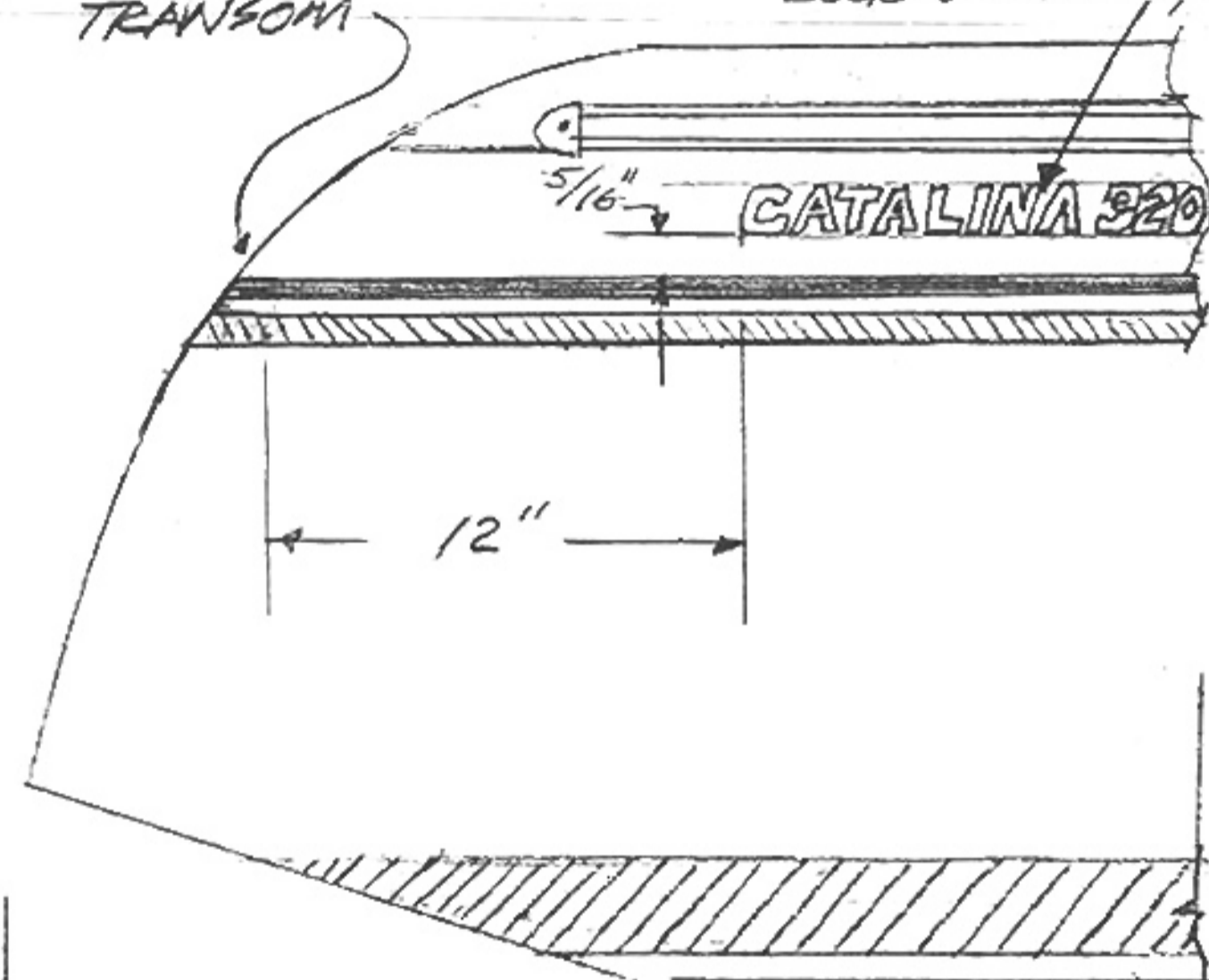


1. CLEAN HULL WHERE STRIPING TAPE IS TO BE APPLIED
2. MARK MEASURED LOCATIONS WITH LEAD PENCIL
3. WET DOWN AREA WITH 5% SOLUTION OF IVORY DISH SOAP AND WATER
4. APPLY TAPE TO MOISENDI AREA.
5. PRESS OUT EXCESS WATER WITH BURNISHING TOOL.
6. REMOVE PAPER TOP COVER FROM TAPE.

CUT AFT END
AT CORNER OF
TRANSOM

MIDWATCH BLUE
LOGO WITH MODEL NO.



REF: MIDWATCH

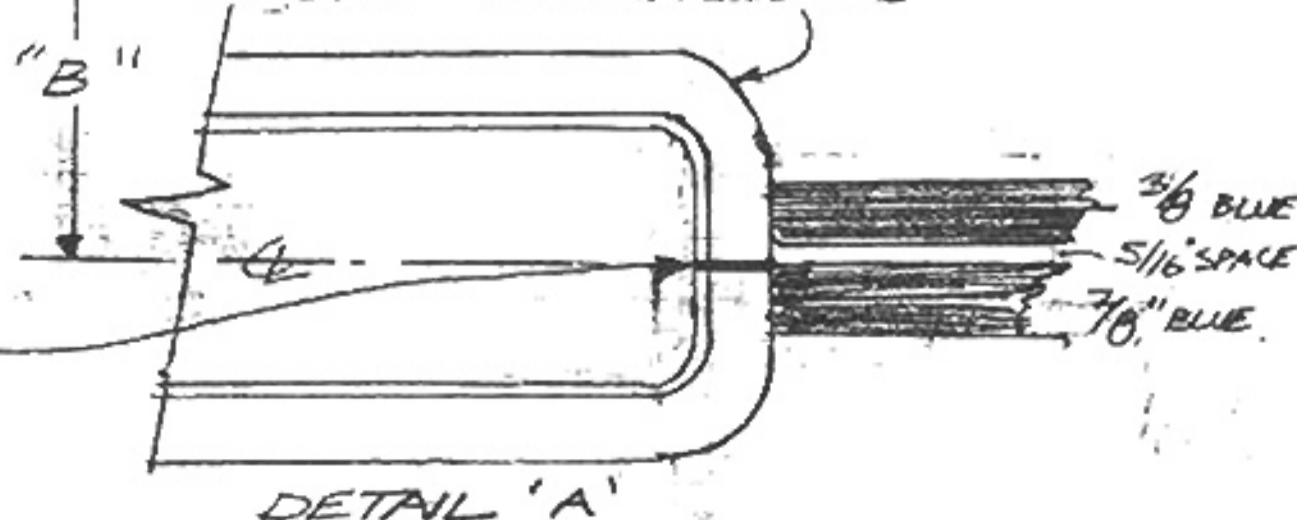
MOD.	"B" DIM.
28	6 1/2"
30	6"
320	6"
34	6"
36	6"
380	7 1/2"
400	11 1/2"
42	6"
470	12"

THE TOP OF
THE 7/8" DARK BLUE
STRIPE IS TO
LINE-UP WITH
THE CENTER OF THE
WINDOW - JOINT GASKET

RUB-
RAIL

ALIGN WINDOW FRAME

"B"



DETAIL 'A'

REV-4 6.4.98 (2) BLUE, IN LIEU OF 3 w/TURP.
REV-3 11.3.97, B DIM. CHANGED.

CATALINA YACHTS
21200 VICTORY BLVD.
WOODLAND HILLS, CA

SCALE: 2
DATE: 1.29.92

APPROVED BY:

DRAWN BY: GD
REVISED: 6.4.98

HULL STRIPING TAPE LOCATION

TYPICAL 28-470

DRAWING NUMBER
320-26002-4